



---

THE VICTORY LODGE  
COLLECTION 2020

---

[www.victoryleisurehomes.co.uk](http://www.victoryleisurehomes.co.uk)





## CONTENTS

LOOK INSIDE	06	MONACO DUO	16	BEECHWOOD	32
CÉZANNE	08	PARK VIEW	24	EXTERNAL APPEAL	40

# Relax in style

## IN OUR PREMIUM, HAND CRAFTED LODGES

At Victory, we do not just design and build lodges; our skilled experts and craftspeople personally create them from the ground up by hand, with the vision of providing you with an elegant, luxurious lodge and a great service.

Whatever your budget, you can sit back, relax, and rest assured that your home has been constructed with the most care and attention to detail possible in our modern, energy efficient production facility.

Victory Leisure Homes is part of J. R. Rix & Sons – a family owned company established in Yorkshire in 1873, regularly appearing in the Times Top Track 250 awards.

PART OF  J. R. RIX & SONS

*Victory*  
Leisure Homes



# THE LODGE COLLECTION

## UPDATED DESIGNS

Every model in our 2020 range has been refined with a style update. We have also added more centre lounge layouts to our range in response to their growing popularity, especially amongst family and group holidaymakers.

## FANTASTIC CHOICE

Each lodge has its own unique style, from our flagship lodge, the Cézanne – in fashionable yellows with a vast range of modern technology and appliances – to the great value Beechwood – with its calming, natural tones. Victory also offer a huge range of sizes and layouts including compact 16ft widths and a massive 46ft 4 bedroomed model.

## CREATE YOUR DREAM HOME

All of our lodges are built by expert craftspeople to BS3632:2015 Residential Specification (optional on the Beechwood), and every one of our models can be customised from a list of optional extras and external finishes.

## TAKE A LOOK AROUND

With a fantastic choice and a great service from a long-established family company – why not book an appointment through your preferred supplier at our showground in East Yorkshire, where you can view our latest launches. Cannot make it to our showground? Head to our website where you can take a 360 virtual tour.

[www.victoryleisurehomes.co.uk](http://www.victoryleisurehomes.co.uk)



# CRAFTED BY HAND



## DESIGN

From technical designers dedicated to creating clever new layouts and space saving designs, to upholstery and fabric sourcing that makes your lodge modern and comfortable; our team has every aspect covered down to the finest detail.

## BUILD

Our skilled craftspeople hand build your lodge in our modern, energy efficient factory, accredited to ISO45001 Health & Safety Requirements. The first things that go into your lodge - after the chassis and floor are finished - are the interior walls. Our joiners then hand assemble and fit all the internal fixtures and fittings and the cladding is added last. The plumbing and electrics are concealed within the structure as it goes along, for a seamless finish. Numerous quality and safety checks take place before the lodge leaves to factory in two halves, ready for assembly in the spot you have chosen.

## MARKET

Our lodges are usually purchased through a network of distributors, or directly from holiday parks, where they are used for luxury holidays or private ownership. Visit our website today to find your local park or dealer, or book an appointment at our East Yorkshire showground.

## MAINTAIN

Just like houses, lodges need regular maintenance. We provide an owner's handbook to guide you through this. In the unlikely event that something goes wrong, our customer services team are on hand to help resolve any issues quickly and efficiently.



# TAKE A LOOK INSIDE

At Victory, we know that the details are what really make a lodge a home-from-home. From Hypnos mattresses for a perfect night's sleep to your own personal choice of cladding, every one of our lodges comes with a wide range of design features and modern technologies to ensure you can relax in the luxury of your new lodge from the very first day you move in.

## CARE IN CONSTRUCTION

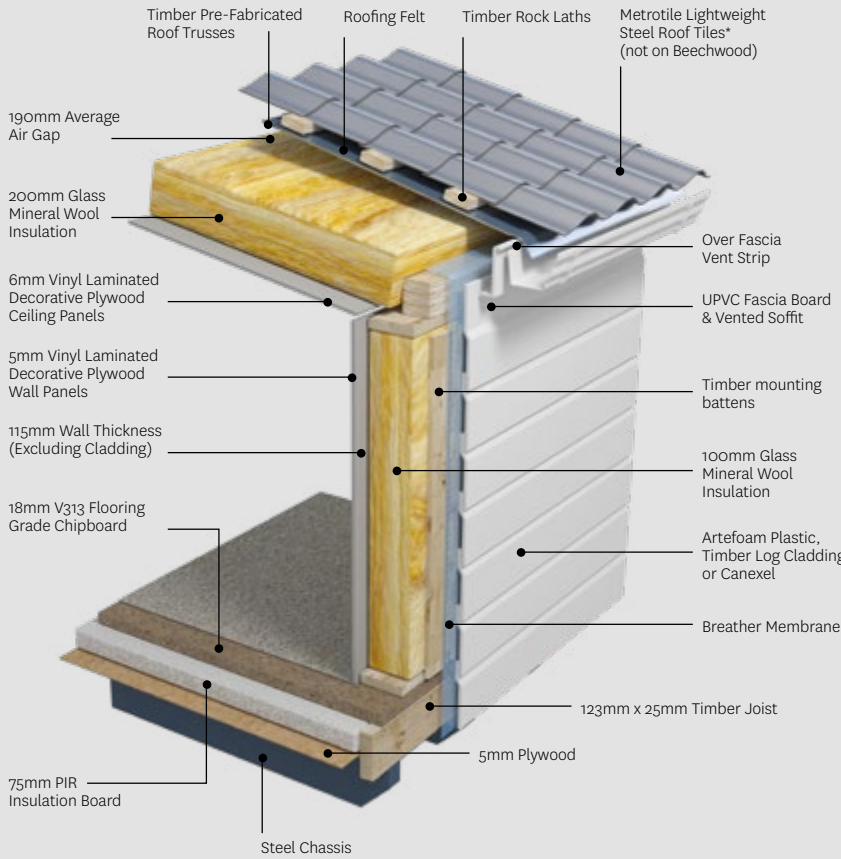
Traditional skills, new technology and fine materials all go into creating the high quality finish of your Victory lodge. From the hand-constructed, fully insulated shell to the craftsman-built stylish furniture, we take great care to thoroughly research our components and seek out quality suppliers with secure warranties, meaning peace of mind for you.

## CAN YOU LIVE IN A LODGE?

Whether or not you can live in your lodge all year round – depends on two main factors. Firstly, the lodge must be built to BS3632:2015 Residential Specification. Some lodges are designed to different specifications – so you must always check which yours is built to. Secondly, your park must have a licence for year round residential use, so make sure to check with your park.

# BUILT TO LAST

Holiday in your lodge and enjoy it all year round, with a 2-year warranty for peace of mind. All of our lodges are built to BS3632:2015 Residential Specification (optional on Beechwood).



## LATEST TECHNOLOGY

Reduce energy consumption with e-glass and LED lamps, and charge your devices with USB charge points in both living and bedroom areas – all as standard. You can also connect your device to a built in Bluetooth speaker system or enjoy movie nights with a home theatre audio system.



## A BREATH OF FRESH AIR

Take in the views and seamlessly connect your living area to the outdoors with twin patio doors and fully glazed side aspect, leading out on to your choice of veranda, for a truly luxurious lifestyle.



## DETAILS THAT MATTER

It's not just the things that you can see that create quality, it's the things that you can't, such as trace heating as standard in all models (optional on Beechwood) to prevent freezing pipes in the winter.



## HOME COMFORTS

Get cosy with central heating and double glazing with e-glass as standard. Then get a great night's sleep with Hypnos™ or SoCozeee mattresses.



## EXTERNAL APPEAL

Make your lodge your own and choose from a wide range of cladding finishes and colours. See page 40 for more details.



## MODERN CONVENIENCES

Fully integrated appliances create a clean finish in the kitchen, from dishwashers to wine coolers; there are plenty of options available.



## STYLISH INTERIORS

Whether you are looking for classic and traditional or modern and fashionable, there is a design for you – each finished with fabrics carefully selected by our interior designers.



# Cézanne

## A LUXURIOUS MODERN CLASSIC

The Cézanne delicately balances classic, timeless design alongside the latest styling trends to create a visibly modern luxury lodge. Our most luxurious lodge yet is packed with all the latest modern conveniences you could wish for, so that owning a Cézanne is a truly lavish experience.

CÉZANNE LODGE  
42 X 20 - 2 BEDROOMS







# CÉZANNE

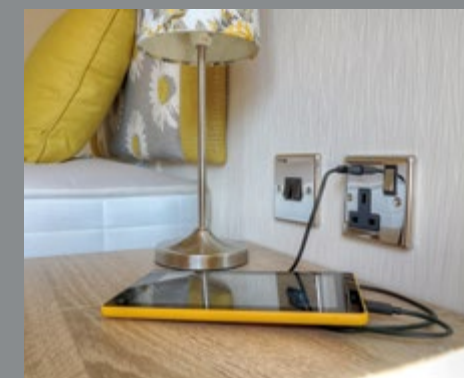
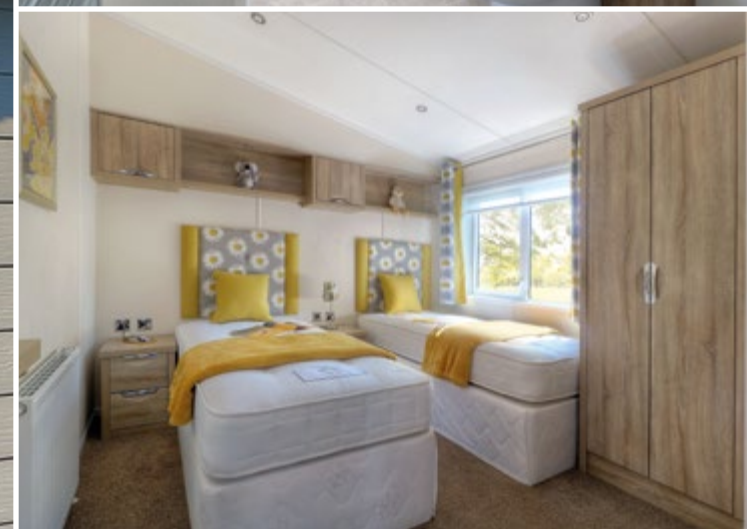
## MAIN FEATURES

- 'L' shaped corner suite with sofa pull out bed
- Co-ordinated scatter cushions
- Dining table & four chairs
- Coffee table
- Feature mirror
- Feature picture
- Electric stove effect fire
- Integrated fridge/freezer
- Integrated 600mm dishwasher
- High level double cavity oven & grill with auto ignition & flame failure device
- High level combination microwave oven (microwave / convection / grill)
- 5 burner hob with auto ignition & flame failure device
- Cooker hood / extractor with light
- Chrome wine rack and separate wine cooler
- Skylight in central position
- King size HYPNOS mattress in master bedroom
- Bedding sets (duvet covers & pillowcases plus duvets, pillows & decorative runners)
- USB point
- Mirror and light
- Shaver socket
- Co-ordinated Day and Night blinds
- BS3632:2015 Residential Specification
- uPVC double glazing
- Central heating with room thermostat and bedroom thermostat radiator valves
- Twin sliding patio door
- Profiled PVC-ue single plank Artefoam external cladding
- Metrotile steel roof
- Heat trace water pipes
- Freestanding washing machine

## POPULAR OPTIONAL EXTRAS

- Galvanised chassis
- Canexel cladding
- Bedroom skylight with blackout blind
- Home theatre audio system
- Integrated washing machine





## FANTASTIC FEATURES IN THE CÉZANNE

- Stylish side entrance porch
- High gloss kitchen with soft close doors
- Fully integrated kitchen appliances including wine cooler
- Bluetooth music centre and USB points
- Hypnos™ mattresses and en-suite bath/shower rooms

*Don't forget that we have optional features to choose from.*



CÉZANNE LODGE – FULL FEATURES

LOUNGE & DINING

- ‘L’ shaped corner suite with sofa pull out bed
- Co-ordinated scatter cushions
- Dining table & four leather effect chairs
- Coffee table
- Feature mirror
- Feature picture
- Electric stove effect fire
- Co-ordinated Day and Night Blinds
- Lined curtains draped from chrome poles & finials
- TV lead socket(s) & power socket(s) in easily accessible position
- Ceiling spotlights

KITCHEN

- Units and wall cupboards with high gloss doors – soft close doors
- Deep pan drawer(s)
- Contrast worktops & matching rear upstands
- Integrated fridge/freezer
- Integrated 600mm dishwasher
- High level double cavity oven & grill with auto ignition & flame failure device
- High level combination microwave oven (microwave / convection / grill)
- 5 burner hob with auto ignition & flame failure device
- Full height hob splashback
- Cooker hood / extractor with light(s)
- 11/2 bowl sink & drainer with mixer tap
- Chrome wine rack and separate wine cooler
- Ceiling spotlights
- Vinyl floor covering
- Skylight in central position

MASTER BEDROOM & EN-SUITE

- King size HYPNOS mattress
- Divan base with storage
- Co-ordinated headboard
- Bedside drawer / cupboard unit(s)
- Fitted full height sliding wardrobe(s) / shelved cupboard / drawer unit
- Position for TV including co-ax & power sockets
- Dresser with drawers, stool & mirror
- Bedhead reading light(s) & ceiling light(s)
- Fully lined curtains with chrome pole & finials
- Bedding set (duvet cover, pillowcases & contrast runner, plus duvet & pillows)
- Co-ordinated Day & Night blinds
- USB point

EN-SUITE

- Bath with shower over, thermostatic mixer taps, shower screen, and fittings
- Twin basins and cupboard unit with high gloss doors
- Concealed cistern with ceramic toilet/dual flush
- Extractor fan
- Mirror and light
- Shaver socket
- Co-ordinated Day and Night Blind
- Vinyl floor covering
- Heated towel rail

BEDROOM 2

- HYPNOS mattresses
- Divan base with storage
- Upholstered headboards
- Bedside units
- Fitted full height wardrobe(s)
- Dresser / dresser shelf area
- Ceiling light(s)
- Fully lined curtains & chrome pole with finial(s)
- Bedding sets (duvet covers & pillowcases plus duvets, pillows & decorative runners)
- USB point

BATHROOM / EN-SUITE TO BEDROOM 2

- Shower cubicle with glass door(s), riser rail & fittings, thermostatic mixer valve
- Inset basin and cupboard unit with high gloss doors
- Concealed cistern with ceramic toilet/dual flush
- Extractor fan
- Mirror and light
- Shaver socket
- Co-ordinated night & day blind
- Vinyl floor covering
- Fitted soap dish & tumbler holders
- Heated towel rail

UTILITY ROOM

- Stainless steel sink & drainer with mixer tap
- Base units & wall cupboard
- Contrast worktop & matching rear upstand
- Freestanding washing machine
- Co-ordinated blind
- Frosted glass in side entrance door
- Vinyl floor covering
- Storage cupboard

EXTERIOR

- Metrotile steel, mineral filled acrylic – coated pantile peaked roof with uPVC soffits & fascias
- Double glazed windows & doors with thermal low E glass – BS3632:2015 specification
- Sliding patio doors
- High performance Artefoam cladding
- Domestic gutters with rainwater fall pipes
- Insulation to BS3632:2015 specification (100mm walls, 200mm roof, 75mm floor)
- Heat trace water pipes
- Galvanised corner steadies & towbar (removable for either front or rear application)
- TV co-axial & sky ready
- External spotlights
- Roof overhang to front aspect

GENERAL & SAFETY

- Gas condensing combi boiler central heating/ hot water
- Vaulted ceilings throughout
- Modern style panelled veneered internal room doors (glazed to hallway)
- Full complement of chrome electric sockets (mostly doubles) & switches protected by RCD
- Practical carpet with underlay (except vinyl areas)
- Smoke alarm and carbon monoxide detector
- Fire extinguisher
- LED lamps
- USB charging points

FLOOR PLANS

CÉZANNE 42 X 20 (2 BEDROOMS)



- Vinyl Flooring
- Fridge Freezer
- Entrance
- Microwave

Please note that the illustration and floor plans are indicative of the general layout only. They do not represent fully the shape and style of furniture and fittings or the detail of content.

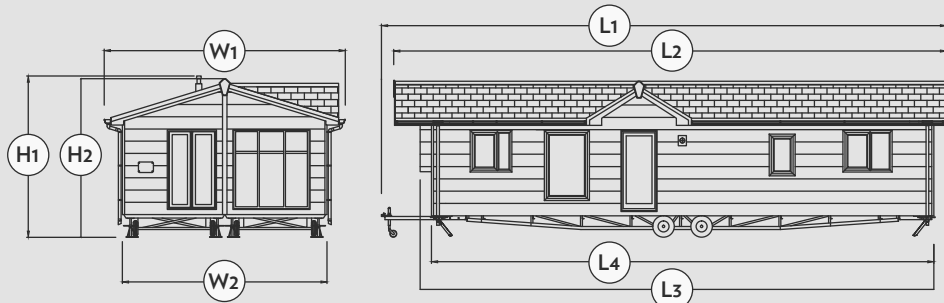
CÉZANNE 42 X 20 (2 BEDROOMS)



For illustration purposes only

MEASUREMENTS

CÉZANNE LODGE RANGE							
MODEL	L1	L2	L3	L4	W1	W2	H1/H2
42 x 20 2 Bedroom	14.06m	14.05m	N/A	12.81m	7.08m	6.19m	4.15m
	46'2"	46'1"	N/A	42'0"	23'3"	20'4"	13'7"



This information may not be applicable to all models; please check with your park operator / retailer for detailed information.



NEXT STEP - TAKE A VIRTUAL TOUR

Visit our website today, where you can take a comprehensive virtual tour of all our models and find out what it really feels like to walk around our lodges without leaving the comfort of your sofa!

[www.victoryleisurehomes.co.uk](http://www.victoryleisurehomes.co.uk)



# Monaco Duo

## EMANATES CLASS AND ELEGANCE

Undoubtedly tasteful and stylish, the delightful Monaco Duo offers plenty of space, comfort and relaxation. The subtle watercolour tones create the timeless appeal, whilst the panoramic views connect you to the outdoors. The longest running model in our collection, it is easy to see why the Monaco Duo is so popular, and for 2020 you can now have the Monaco Duo with a fashionable central lounge layout.

### MONACO DUO LODGES

40 X 20 - 2 BEDROOMS

41 X 20 - 2 BEDROOMS CL

41 X 20 - 3 BEDROOMS

Optional: Home Theatre Audio System







# MONACO DUO

## MAIN FEATURES

- Two upholstered freestanding sofas  
1 of which has a pull out bed
- Co-ordinated scatter cushions
- Dining table & four leather effect chairs  
(2 extra chairs in 3 bedroom model)
- Coffee table
- Feature mirror
- Feature picture
- Electric fire with back light surround
- Standard lamp
- Large integrated fridge / freezer
- Integrated dishwasher
- Oven & grill with auto ignition & flame failure device
- High level combination microwave oven  
(microwave / convection / grill)
- 5 burner hob with auto ignition & flame failure device
- Skylight in central position
- 2 bar stools (except central lounge model)
- King Size HYPNOS mattress
- Bedding sets (duvet covers & pillowcases  
plus duvets, pillows & decorative runners)
- Co-ordinated Day and Night Blinds
- BS3632:2015 Residential Specification
- uPVC double glazing in anthracite
- Central heating with room thermostat and  
bedroom thermostat radiator valves
- Twin sliding patio door
- Profiled PVC-ue Artefoam external cladding
- Metrotile steel roof
- Heat trace water pipes

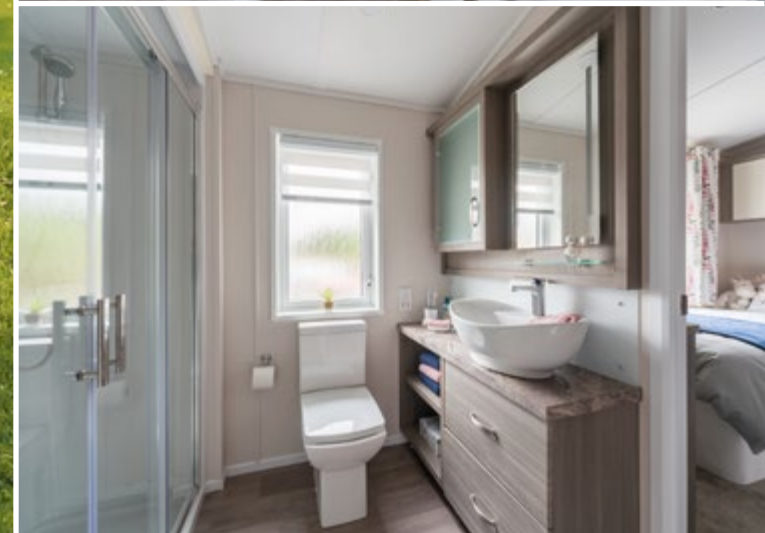
## POPULAR OPTIONAL EXTRAS

- Galvanised chassis
- Canoxel cladding
- Bedroom skylight with blackout blind
- Home theatre audio system
- Integrated or freestanding washing machine





Optional: Canexel Acadia Cladding



## FANTASTIC FEATURES IN THE MONACO DUO

- Large kitchen with discreet utility area attached\*
- Five burner hob and fully integrated appliances
- Anthracite double-glazed twin patio doors
- Large double shower
- Hypnos™ mattresses throughout

*Don't forget that we have optional features to choose from  
\*except centre lounge.*



MONACO DUO LODGES – FULL FEATURES

LOUNGE & DINING

- Two upholstered freestanding sofas 1 of which has a pull out bed
- Co-ordinated scatter cushions
- Dining table & four leather effect chairs (2 extra chairs in 3 bedroom model)
- Coffee table
- Feature mirror
- Feature picture
- Electric fire with back light surround
- Co-ordinated Day and Night Blinds
- Lined curtains draped from chrome poles & finials
- TV lead socket(s) & power socket(s) in easily accessible positions
- Ceiling spotlights
- Standard lamp
- Feature radiator (not all models)

KITCHEN

- Ample base units with wall cupboards all with matt panelled soft close doors and drawers
- Contrast worktops & matching rear upstands
- Large integrated fridge / freezer
- Integrated dishwasher
- Oven & grill with auto ignition & flame failure device
- High level combination microwave oven (microwave / convection / grill)
- 5 burner hob with auto ignition & flame failure device
- Glass splashback
- Cooker hood / extractor with light(s)
- 1½ bowl sink & drainer with mixer tap
- Chrome wine rack (not all models)
- Co-ordinated Day and Night Blinds
- Ceiling spotlights
- Vinyl flooring
- Skylight in central position
- 2 bar stools
- Soft lighting above high level cupboards

MASTER BEDROOM

- King Size Hypnos™ mattress
- Divan base with storage
- Upholstered headboard
- Bedside units
- Fitted full height wardrobe(s) / shelved cupboard / drawer unit (not all in every model)
- Position for TV including co-ax & power sockets
- Dresser / dresser shelf area (fittings, drawers, stool & mirror may vary by model)
- Full length mirror (not all models)
- Bedside table lamps with ceiling spotlights
- Fully lined curtains & chrome pole with finials
- Bedding set (duvet cover, pillowcases & contrast runner, plus duvet & pillows)
- Co-ordinated Day and Night Blind

BEDROOMS 2 & 3

- Hypnos™ mattresses
- Divan base with storage
- Upholstered headboards
- Central bedside unit with drawers (not all models)
- Fitted full height wardrobe(s)
- Dresser shelf area
- Ceiling light(s)
- Fully lined curtains & chrome pole with finials
- Bedding sets (duvet covers & pillowcases plus duvets, pillows & decorative runners)
- Co-ordinated Day and Night Blind

BATHROOM/ EN-SUITE\*

- Shower cubicle with glass door(s), riser rail & fittings, thermostatic mixer valve
- Bath with shower over, thermostatic mixer taps, shower screen, riser rail & fittings
- Basin & tap with pop-up waste, with unit below
- Close-coupled ceramic toilet with dual flush
- Extractor fan if bath or shower fitted
- Mirror and light
- Wall cabinet
- Co-ordinated Day and Night Blind
- Vinyl floor covering
- Ceiling light(s)
- Heated towel rail
- \*(not all fittings in all models) see layout for details

UTILITY ROOM

- Stainless steel sink & drainer with mixer tap
- Base units & wall cupboards
- Contrast worktop & matching rear upstand
- Space for washing machine
- Co-ordinated blind
- Frosted glass in side entrance door
- Vinyl floor covering

EXTERIOR

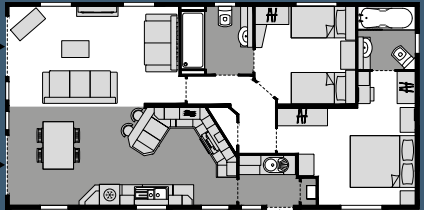
- Metrotile steel, mineral filled acrylic – coated pantile peaked roof with uPVC soffits & fascias
- Double glazed windows & doors with thermal low E glass – BS3632:2015 specification
- Patio door/s
- High performance Artefoam cladding
- Domestic gutters with rainwater fall pipes
- Insulation to BS3632:2015 Residential Specification (100mm walls, 200mm roof, 75mm floor)
- Heat trace water pipes
- Galvanised corner steadies & towbar (removable for either front or rear application)
- TV co-axial & sky ready
- External light
- Roof overhang to front aspect with lights
- Smoke & carbon monoxide detector(s)

GENERAL & SAFETY

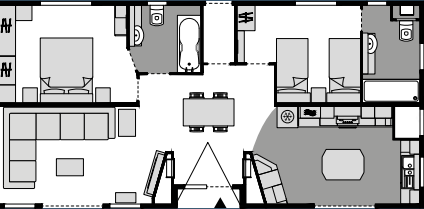
- Gas condensing combi boiler central heating/hot water
- Vaulted ceilings throughout
- Modern style veneered internal panelled room doors (glazed to hallway)
- Full complement of chrome electric sockets (mostly doubles) & switches protected by RCD
- Practical carpet with underlay (except vinyl areas)
- Smoke alarm and carbon monoxide detector
- Fire extinguisher
- LED lamps
- USB charging points

FLOOR PLANS

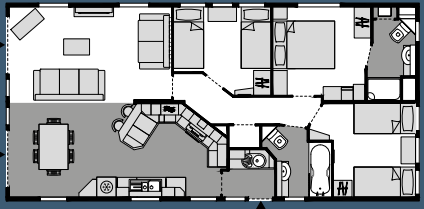
MONACO DUO 40 X 20 (2 BEDROOMS)



MONACO DUO 41 X 20 (2 BEDROOMS CL)



MONACO DUO 41 X 20 (3 BEDROOMS)



- Vinyl Flooring
- Entrance
- Fridge Freezer
- Microwave

Please note that the illustration and floor plans are indicative of the general layout only. They do not represent fully the shape and style of furniture and fittings or the detail of content.

MONACO DUO 41 X 20 (3 BEDROOMS)



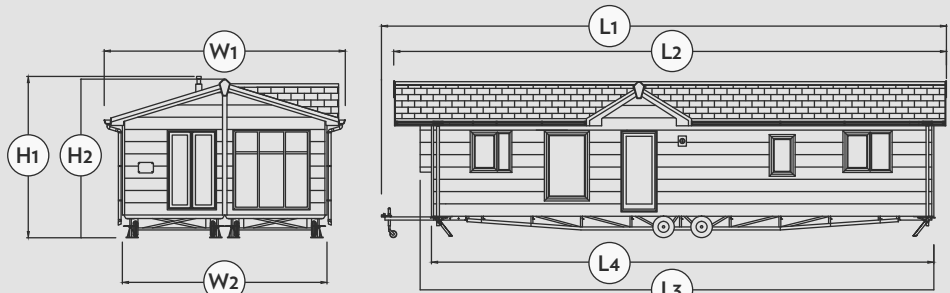
NEXT STEP - TAKE A VIRTUAL TOUR

Visit our website today, where you can take a comprehensive virtual tour of all our models and find out what it really feels like to walk around our lodges without leaving the comfort of your sofa!

[www.victoryleisurehomes.co.uk](http://www.victoryleisurehomes.co.uk)

MEASUREMENTS

MONACO DUO LODGE RANGE							
MODEL	L1	L2	L3	L4	W1	W2	H1/H2
40 x 20 2 Bedroom	13.53m	13.52m	N/A	12.28m	7.08m	6.19m	4.15m
	44'5"	44'4"	N/A	40'3"	23'3"	20'4"	13'7"
41 x 20 2 Bedroom CL	14.06m	13.44m	N/A	12.81m	7.08m	6.19m	4.15m
	46'1"	44'1"	N/A	42'0"	23'3"	20'4"	13'7"
41 x 20 3 Bedroom	14.09m	14.08m	N/A	12.84m	7.08m	6.19m	4.15m
	46'3"	46'2"	N/A	42'2"	23'3"	20'4"	13'7"





# Parkview

## THE PERFECT FAMILY ESCAPE

This great value, comfortable and stylish lodge is produced to residential standards for all-year round breaks, and has been improved and upgraded for 2020 with several additional features as standard. The Parkview is the most versatile range in our collection with a layout to suit almost any family – including a compact 36ft length, a central lounge, and our popular four bedroomed layout.

### PARKVIEW LODGES

36 X 20 – 2 BEDROOMS  
40 X 20 – 2 BEDROOMS  
40 X 20 – 2 BEDROOMS CL

41 X 20 – 3 BEDROOMS  
42 X 20 – 3 BEDROOMS CL  
46 X 20 – 4 BEDROOMS



Optional: Home Theatre Audio System





Optional: Home Theatre Audio System



## PARKVIEW

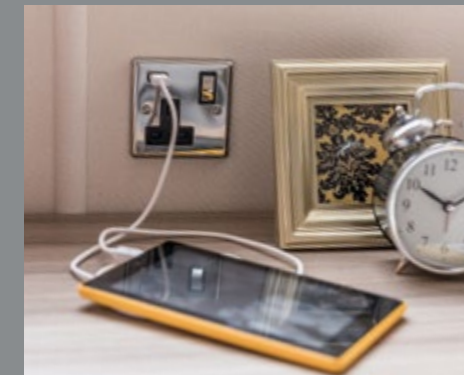
### MAIN FEATURES

- Two upholstered freestanding sofas 1 of which has a pull out bed
- Co-ordinated scatter cushions
- Dining table & four ladder backed chairs (extra chairs in 3 & 4 bedroom models)
- Coffee table
- Feature mirror (not all models)
- Feature picture (not all models)
- Electric fire in surround suite
- Integrated fridge / freezer
- Integrated 600mm dishwasher
- High level double cavity oven & grill with auto ignition & flame failure device
- High level combination microwave oven (microwave / convection / grill)
- 5 burner hob with auto ignition & flame failure device
- Cooker hood / extractor with light
- Kitchen skylight
- Position for TV including co-ax & power sockets
- USB points
- Bedroom 2 in 4 bed model has metal framed double bed with wooden laths and SoCozeee mattress. Full storage beneath
- Shaver socket
- BS3632:2015 Residential Specification
- uPVC double glazing
- Central heating with room thermostat and bedroom thermostat radiator valves
- Sliding patio door
- Profiled PVC-ue Artefoam external cladding
- Metrotile steel roof
- Heat trace water pipes

### POPULAR OPTIONAL EXTRAS

- Galvanised chassis
- Canexel cladding
- Bedroom skylight with blackout blind
- Home theatre audio system
- Integrated or freestanding washing machine





## FANTASTIC FEATURES IN THE PARKVIEW

- Plenty of layout options including a 4 bedroom and a central lounge model
- USB points in kitchen and bedrooms
- SoCozeeee mattresses exclusive to Victory
- Family bathroom and bath in every model
- Built to BS3632:2015 Residential Specification

*Don't forget that we have optional features to choose from.*



PARKVIEW LODGE - FULL FEATURES

LOUNGE & DINING

Two upholstered freestanding sofas 1 of which has a pull out bed

Co-ordinated scatter cushions

Dining table & four ladder backed chairs (extra chairs in 3 & 4 bedroom models)

Coffee table

Feature mirror (not all models)

Feature picture (not all models)

Electric fire in surround suite

Lined curtains draped from chrome poles & finials

TV lead socket(s) & power socket(s) in easily accessible position

Ceiling pendant lights

Chrome sockets

KITCHEN

Base units and walls cupboards – soft close doors

Contrast worktops & matching rear upstands

Integrated fridge / freezer

Integrated 600mm dishwasher

High level double cavity oven & grill with auto ignition & flame failure device

High level combination microwave oven (microwave / convection / grill)

5 burner hob with auto ignition & flame failure device

Hob splashback

Cooker hood / extractor with light(s)

11/2 bowl textured stainless steel sink & drainer with mixer tap

Co-ordinated roller blind

Ceiling spotlights

Vinyl floor covering

Kitchen skylight

USB points

Wine rack (not all models)

Chrome sockets

MASTER BEDROOM

Metal framed lift up double bed with wooden laths and SoCozeeee mattress. Full storage beneath

Upholstered headboard

Bedside drawer / cupboard unit(s)

Fitted full height wardrobe(s) /drawer unit (not all in every model)

Position for TV including co-ax & power sockets

Dresser / dresser shelf area (fittings, drawers, stool & mirror may vary by model)

Full length mirror (not all models)

Bedhead reading light(s) & ceiling light(s)

Fully lined curtains & chrome pole with finial(s)

USB points

Chrome sockets

BEDROOM 2, 3 & 4

Bedroom 2 in 4 bed model has metal framed double bed with wooden laths and SoCozeeee mattress. Full storage beneath

Two metal framed single beds in bedrooms 3 & 4 with wooden laths and SoCozeeee mattress. Full storage beneath

Upholstered headboards

Central bedside unit

Fitted full height wardrobe(s)

Dresser / dresser shelf area

Ceiling light(s)

Fully lined curtains & chrome pole with finial(s)

USB point

Chrome sockets

BATHROOM / EN-SUITE\*

Shower cubicle with glass door(s), riser rail & fittings, thermostatic mixer valve

Bath with shower over, thermostatic mixer taps, shower screen, riser rail & fittings

Inset basin(s) & tap(s) and cupboard unit

Close-coupled ceramic toilet with dual flush

Extractor fan if bath or shower fitted

Mirror unit

Shaver socket

Co-ordinated blind

Vinyl floor covering

Ceiling light(s)

Gown / towel hooks

Heated towel rails

\*(not all fittings in all models) see layout for details

UTILITY ROOM\*

Stainless steel sink & drainer with mixer tap – not all models

Base units & wall cupboards

Contrast worktop & matching rear upstand

Space for washing machine – not all models

Co-ordinated blind

Frosted glass in side entrance door

Vinyl floor covering

\*(not all fittings in all models) see layout for details

EXTERIOR

Metrotile steel, mineral filled acrylic – coated pantile peaked roof with uPVC soffits & fascias

Double glazed windows & doors with thermal low E glass – BS3632:2015 specification

Patio door/s

High performance Artefoam cladding

Domestic gutters with rainwater fall pipes

Insulation to BS3632:2015 specification (100mm walls, 200mm roof, 75mm floor)

Heat trace water pipes

Galvanised corner steadies & towbar (removable for either front or rear application)

TV co-axial & sky ready

Modern bulkhead light/s

Roof overhang to front aspect

GENERAL & SAFETY

Gas condensing combi boiler central heating/hot water

Vaulted ceilings throughout

Modern style veneered internal room doors (glazed to hallway)

Full complement of electric sockets (mostly doubles) & switches protected by RCD

Practical carpet with underlay (except vinyl areas)

Smoke alarm and carbon monoxide detector

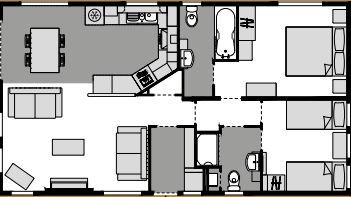
Fire extinguisher

LED lamps

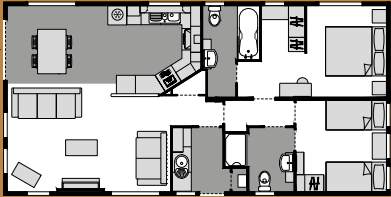
USB charging points

FLOOR PLANS

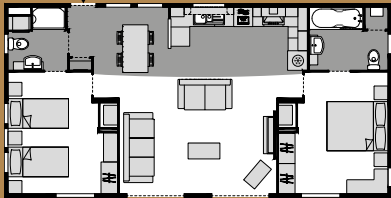
PARKVIEW 36 X 20 (2 BEDROOMS)



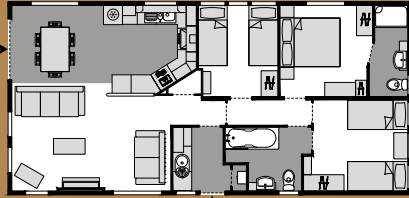
PARKVIEW 40 X 20 (2 BEDROOMS)



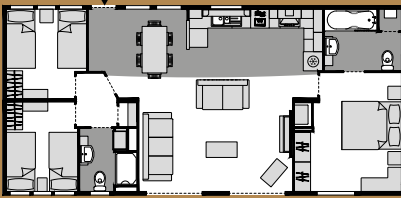
PARKVIEW 40 X 20 (2 BEDROOMS CL)



PARKVIEW 41 X 20 (3 BEDROOMS)



PARKVIEW 42 X 20 (3 BEDROOMS CL)



PARKVIEW 46 X 20 (4 BEDROOMS)



For illustration purposes only

PARKVIEW 40 X 20 (2 BEDROOMS CL)

NEXT STEP - TAKE A VIRTUAL TOUR

Visit our website today, where you can take a comprehensive virtual tour of all our models and find out what it really feels like to walk around our lodges without leaving the comfort of your sofa!

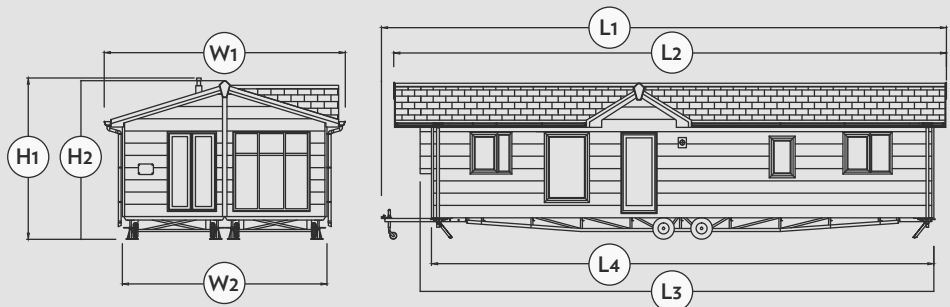
[www.victoryleisurehomes.co.uk](http://www.victoryleisurehomes.co.uk)

- Vinyl Flooring
- Entrance
- Fridge Freezer
- Microwave

Please note that the illustration and floor plans are indicative of the general layout only. They do not represent fully the shape and style of furniture and fittings or the detail of content.

MEASUREMENTS

PARKVIEW LODGE RANGE							
MODEL	L1	L2	L3	L4	W1	W2	H1/H2
36 x 20 2 Bedroom	12.23m 40'1"	12.22m 40'1"	N/A	11.22m 36'10"	6.62m 21'9"	6.19m 20'4"	4.15m 13'7"
40 x 20 2 Bedroom	13.30m 43'8"	13.29m 43'7"	N/A	12.28m 40'3"	6.62m 21'9"	6.19m 20'4"	4.15m 13'7"
40 x 20 2 Bedroom CL	13.30m 00'0"	12.45m 00'0"	N/A	12.28m 00'0"	6.62m 00'0"	6.19m 00'0"	4.15m 00'0"
41 x 20 3 Bedroom	13.86m 45'6"	13.85m 45'5"	N/A	12.84m 42'2"	6.62m 21'9"	6.19m 20'4"	4.15m 13'7"
41 x 20 3 Bedroom CL	14.06m 46'1"	13.21m 43'3"	N/A	13.04m 42'8"	6.62m 21'9"	6.19m 20'4"	4.15m 13'7"
46 x 20 4 Bedroom	15.12m 49'7"	15.10m 49'6"	N/A	14.11m 46'4"	6.62m 21'9"	6.19m 20'4"	4.15m 13'7"





# Beechwood

## STYLE WITHOUT COMPROMISE

The Beechwood offers great value and plenty of space whilst retaining the quality and comfort that gives a lodge that homely feel, making it a serene, relaxing retreat to return to weekend after weekend. For 2020 we've given the Beechwood a style update – introducing a range of modern fabrics and colours.

### BEECHWOOD LODGES

40 X 16 – 2 BEDROOMS  
40 X 16 – 3 BEDROOMS  
29 X 20 – 2 BEDROOMS

40 X 20 – 2 BEDROOMS  
41 X 20 – 3 BEDROOMS

Optional: Home Theatre Audio System







Optional: Integrated Microwave



# BEECHWOOD

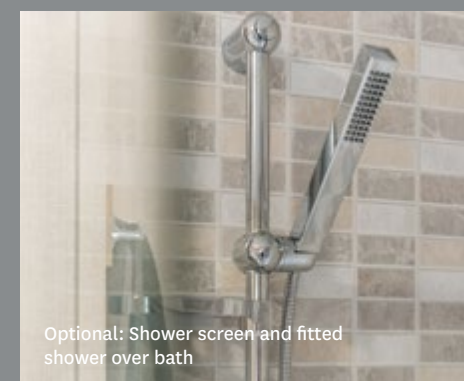
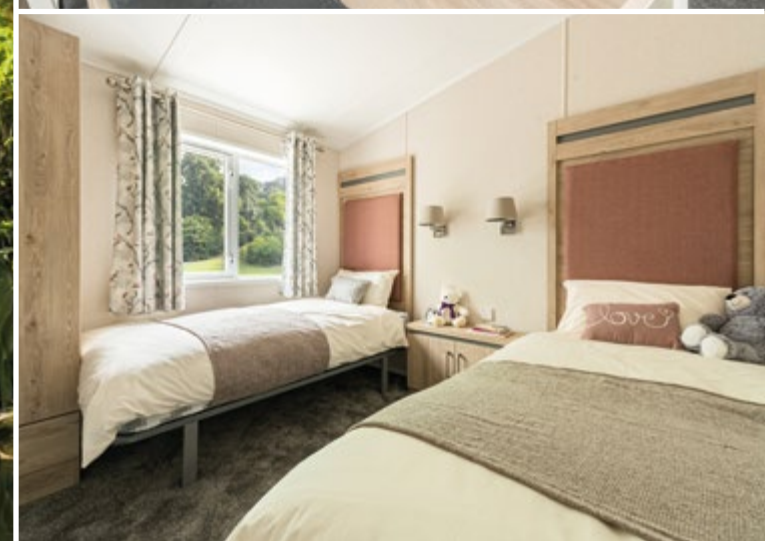
## MAIN FEATURES

- 'L' shaped lounge seating
- Co-ordinated scatter cushions
- Dining table & four ladder backed chairs  
– extra chairs on the 3 bed model
- Coffee table
- Electric fire in surround suite
- Integrated fridge / freezer
- Cooker with 4 burner hob with auto ignition & flame failure device and glass splashback
- Cooker hood / extractor with light(s)
- Metal framed lift up double bed with wooden laths and SoCozeee mattress. Full storage beneath
- Shaver socket
- USB sockets
- Extractor fan
- Mirror unit
- uPVC double glazing
- Central heating with room thermostat and bedroom and lounge thermostat radiator valves
- Sliding patio door
- Profiled PVC-ue Artefoam external cladding

## POPULAR OPTIONAL EXTRAS

- BS3632:2015 Residential Specification
- Canexel cladding
- Colour co-ordinated windows to match cladding
- Integrated microwave
- Integrated dishwasher and washing machine
- Freestanding washing machine
- Lounge sofa pull out bed
- Shower fittings / screen above bath (bath as standard)





Optional: Shower screen and fitted shower over bath



Optional: Integrated Dishwasher

## FANTASTIC FEATURES IN THE BEECHWOOD

- Great range of layouts with 16ft and 20ft width options available
- Large open plan utility area in 20ft models
- USB charge points in kitchen and bedrooms
- SoCozeeee Mattresses exclusive to Victory
- Built to exceed EN1647 standards

*Don't forget that we have optional features to choose from.*



BEECHWOOD LODGES – FULL FEATURES

LOUNGE & DINING

‘L’ shaped lounge seating  
Co-ordinated scatter cushions  
Dining table & four ladder backed chairs – extra chairs on the 3 bed model  
Coffee table  
Electric fire in surround suite  
Lined curtains draped from chrome poles & finials  
TV lead socket(s) & power socket(s) in easily accessible position  
Ceiling pendant lights

KITCHEN

Base units and wall cupboards with soft close doors  
Contrast worktops & matching rear upstands  
Integrated fridge / freezer  
Cooker with 4 burner hob with auto ignition & flame failure device and glass drop down lid  
Cooker hood / extractor with light(s)  
Stainless steel sink & drainer with mixer tap  
Co-ordinated venetian blind  
Ceiling spotlights  
Vinyl floor covering  
USB socket

MASTER BEDROOM

Metal framed lift up double bed with wooden laths and mattress. Full storage beneath  
Upholstered headboard  
Bedside cupboard unit(s)  
Fitted full height wardrobe(s) /drawer unit  
Position for TV including co-ax & power sockets  
Dresser / dresser shelf area with stool (not all models)  
Bedhead reading light(s) & ceiling light(s)  
Fully lined curtains & chrome pole with finials  
Shaver socket  
USB socket

BEDROOMS 2 & 3

Two metal framed single beds in bedrooms with wooden laths and mattress. Full storage beneath  
Upholstered headboards  
Central bedside unit  
Fitted full height wardrobe(s)  
Dresser / dresser shelf area  
Ceiling light(s)  
Fully lined curtains & chrome pole with finials  
USB sockets

BATHROOM / EN-SUITE\*

Shower cubicle with glass door(s), riser rail & fittings, thermostatic mixer valve  
Bath with thermostatic mixer taps  
Inset basin(s) & tap(s) and cupboard unit  
Close-coupled ceramic toilet with dual flush  
Extractor fan if bath or shower fitted  
Mirror unit  
Co-ordinated blind  
Vinyl floor covering  
Ceiling light(s)  
Dressing gown / towel hooks  
Heated towel rails  
\*(not all fittings in all models) see layout for details

ENTRANCE ROOM\*

Base units & wall cupboards  
Contrast worktop & matching rear upstand  
Space for washing machine – not all models  
Frosted glass in side entrance door  
Vinyl floor covering  
\*(not applicable to all models) see layouts for details

EXTERIOR

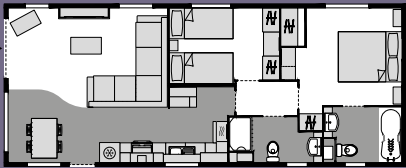
Steel pantile roof  
Double glazed windows & doors with thermal low E glass  
Patio door/s  
High performance Artefoam cladding  
Domestic gutters with rainwater fall pipes  
Insulation to BS3632:2015 specification (100mm walls, 200mm roof, 75mm floor) – optional package  
Galvanised corner steadies & towbar (removable for either front or rear application)  
TV co-axial & sky ready  
Modern bulkhead light/s  
Roof overhang to front aspect

GENERAL & SAFETY

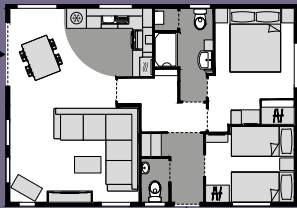
Gas condensing combi boiler central heating/hot water  
Vaulted ceilings throughout  
Modern style veneered internal room doors  
Full complement of electric sockets (mostly doubles) & switches protected by RCD  
Practical carpet with underlay (except vinyl areas)  
Smoke alarm and carbon monoxide detector  
Fire extinguisher  
LED lamps  
USB charging points

FLOOR PLANS

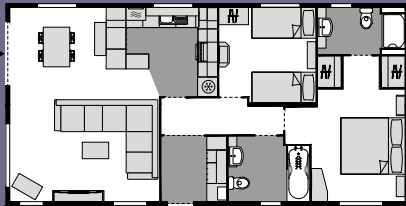
BEECHWOOD 40 X 16  
(2 BEDROOMS)



BEECHWOOD 29 X 20  
(2 BEDROOMS)



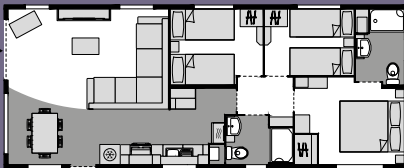
BEECHWOOD 40 X 20  
(2 BEDROOMS)



BEECHWOOD 41 X 20  
(3 BEDROOMS)



BEECHWOOD 40 X 16  
(3 BEDROOMS)



For illustration purposes only

BEECHWOOD 40 X 20  
(2 BEDROOMS)

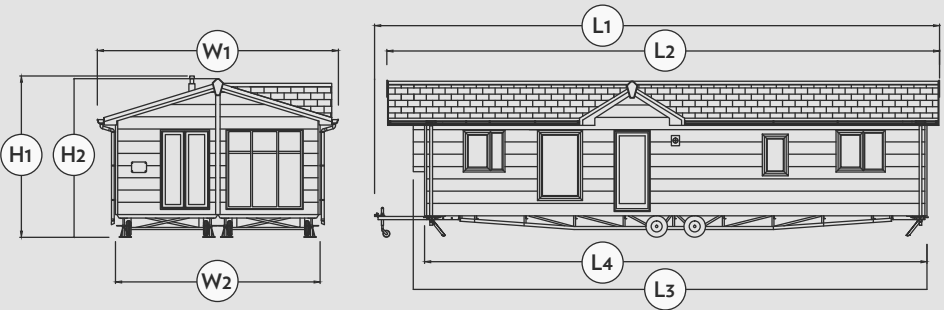
NEXT STEP - TAKE A VIRTUAL TOUR

Visit our website today, where you can take a comprehensive virtual tour of all our models and find out what it really feels like to walk around our lodges without leaving the comfort of your sofa!

[www.victoryleisurehomes.co.uk](http://www.victoryleisurehomes.co.uk)

MEASUREMENTS

BEECHWOOD LODGE RANGE							
MODEL	L1	L2	L3	L4	W1	W2	H1/H2
40 x 16 2 bedrooms	13.30m	13.29m	N/A	12.28m	5.43m	5.02m	4.09m
	43'8"	43'7"	N/A	40'3"	17'10"	16'6"	13'5"
40 x 16 3 bedrooms	13.30m	13.29m	N/A	12.28m	5.43m	5.02m	4.09m
	43'8"	43'7"	N/A	40'3"	17'10"	16'6"	13'5"
29 x 20 2 bedrooms	9.95m	9.94m	N/A	8.93m	6.62m	6.19m	4.15m
	32'8"	32'7"	N/A	29'4"	21'9"	20'4"	13'7"
40 x 20 2 bedrooms	13.30m	13.29m	N/A	12.29m	6.62m	6.19m	4.15m
	43'8"	43'7"	N/A	40'4"	21'9"	20'4"	13'7"
41 x 20 3 bedrooms	13.86m	13.85m	N/A	12.84m	6.62m	6.19m	4.15m
	45'6"	45'5"	N/A	42'2"	21'9"	20'4"	13'7"





# EXTERNAL APPEAL

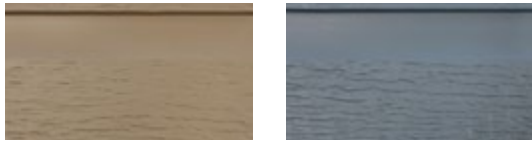
Our standard lodge exteriors are made with low maintenance PVC-ue Artefoam.

## ARTEFOAM DEEP GRAIN

Cream is the standard colour on Monaco Duo lodges.



Cream (Standard colour) Sand



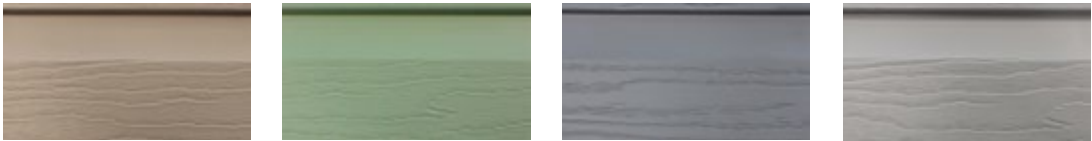
Beige Blue

## ARTEFOAM

Cream is the standard colour on Beechwood and Parkview lodges.



Cream (Standard colour) White Beige Light Blue



Claystone Quarry Grey Quartz Grey Light Grey

## ARTEFOAM SINGLE PLANK

Standard on Cézanne lodges.



Colour range same as ARTEFOAM

We also offer beautiful timber cladding and a range of Canexel® finishes for something that bit more special.

## TIMBER CLADDING

Profiled natural timber board requires regular maintenance.



Cherry



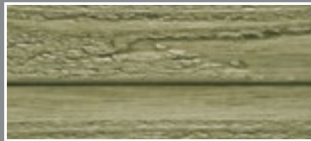
Mid Oak

## CANEXEL®

Canexel® is a wood effect composite cladding that requires minimal maintenance.



Walnut



Acadia



Sierra



Sand



Yellowstone



Cedar

Optional: Canexel Acadia Cladding







## VISIT OUR SHOWGROUND

Nothing beats the feeling of seeing your new home for the first time.

By making an appointment through your chosen park/dealer, you can come and see our fantastic range of designs and discuss what our ranges can offer you. They can also be seen on many parks across the UK. Give us a call or check our interactive map on our website to find out where the nearest location is to you.

We hope you find what you're looking for and look forward to hearing from you in the near future!

Peter T Nevitt  
CEO

## 2 YEAR WARRANTY

Our team of experienced, knowledgeable leisure industry professionals pride themselves on exceeding manufacturing standards to provide you with a lodge that will keep you safe and warm for many years to come. We offer an extensive two-year warranty on all of our lodges so you can rest easy, please visit our website for full details.

\*Visit our website for full details on our 2 year warranty

## IMPORTANT NOTES

In order for any Victory Lodge to be used, it needs to be correctly sited, have steps or other means of entry and be connected to services (an appropriate propane gas supply, mains electricity to suit the required wattage off-take, mains water at a pressure to suit the appliances and a waste water / sewage outlet). Most models can be powered by mains electricity only, although some layout changes will be necessary.

All Victory Lodges are built to comply with many European and British Standards and all relevant Codes of Practice required by the National Caravan Council Certification Scheme and those endorsed by The British Holiday Home and Parks Association.

The sizes given are reasonably accurate shell measurements, but if your chosen pitch has size limitations or obstructions, you should consult with your park operator or dealer to establish specific sizes.

Illustrations, photographs, descriptions, information and statements contained in this brochure and any other Victory Leisure Homes Ltd. literature are intended only as a general guide. They are relevant to the product at the time of writing and production of the brochure / literature, but Victory Leisure Homes Ltd. reserves the right to change any materials, fittings, sizes etc. at any time and without prior notice as supply, product development or legislation conditions demand.

The matching and lining-up of patterns on wallboards, fabrics and doors is not always possible because of the lodge design and methods of construction.

Some of the items photographed (e.g. all patio decking, televisions, DVD players, media centres and general props) are for illustration purposes only. Please refer to your park or dealer if you need clarification.

The warranty can be viewed and downloaded on the website [www.victoryleisurehomes.co.uk](http://www.victoryleisurehomes.co.uk) or by sending a stamped addressed envelope to the address shown on the back page.

For purchasers outside of the UK, please refer to your supplier for warranty details. The warranty available is additional to and does not affect your statutory rights under consumer legislation.

The description given for some features is not always applicable to every model within a range as there may be legal / technical / layout requirements that may create the need to alter or leave out the stated feature. Also, any item pictured may be different in size or style in other models within the range.

Please be aware that supplied appliances and fittings may vary from those shown / described as manufacturers may change, update or make obsolete and introduce new

models. Such changes are beyond our control and we draw your attention to the fact that we reserve the right to change as these supply implications take effect.

If any feature is critical to your purchasing decision, it would be wise to check beforehand exactly what is supplied with your chosen model.





VictoryLeisureHomes



@VictoryLeisure



VictoryLeisure



VictoryLeisureHomes



Victory Leisure Homes Limited, Broad Lane, Gilberdyke, East Yorkshire, HU15 2TS  
T: 01430 471 200 F: 01430 471 222 E: sales@victoryleisurehomes.co.uk

[www.victoryleisurehomes.co.uk](http://www.victoryleisurehomes.co.uk)

